



SuPPoRT Colorado

Supporting Perinatal substance use Prevention,
Recovery, and Treatment in Colorado



What is a Plan of Safe Care?

A Plan of Safe Care offers guidance, support, and recommendations for ensuring the safety and well-being of infants and families impacted by substance use perinatally and following hospital discharge.



Plans of Safe Care ensure that systems—and the people who work within them—work hand in hand with the families they serve to address inequities and promote continuity of care.

Download the BEST PRACTICE RECOMMENDATIONS today!

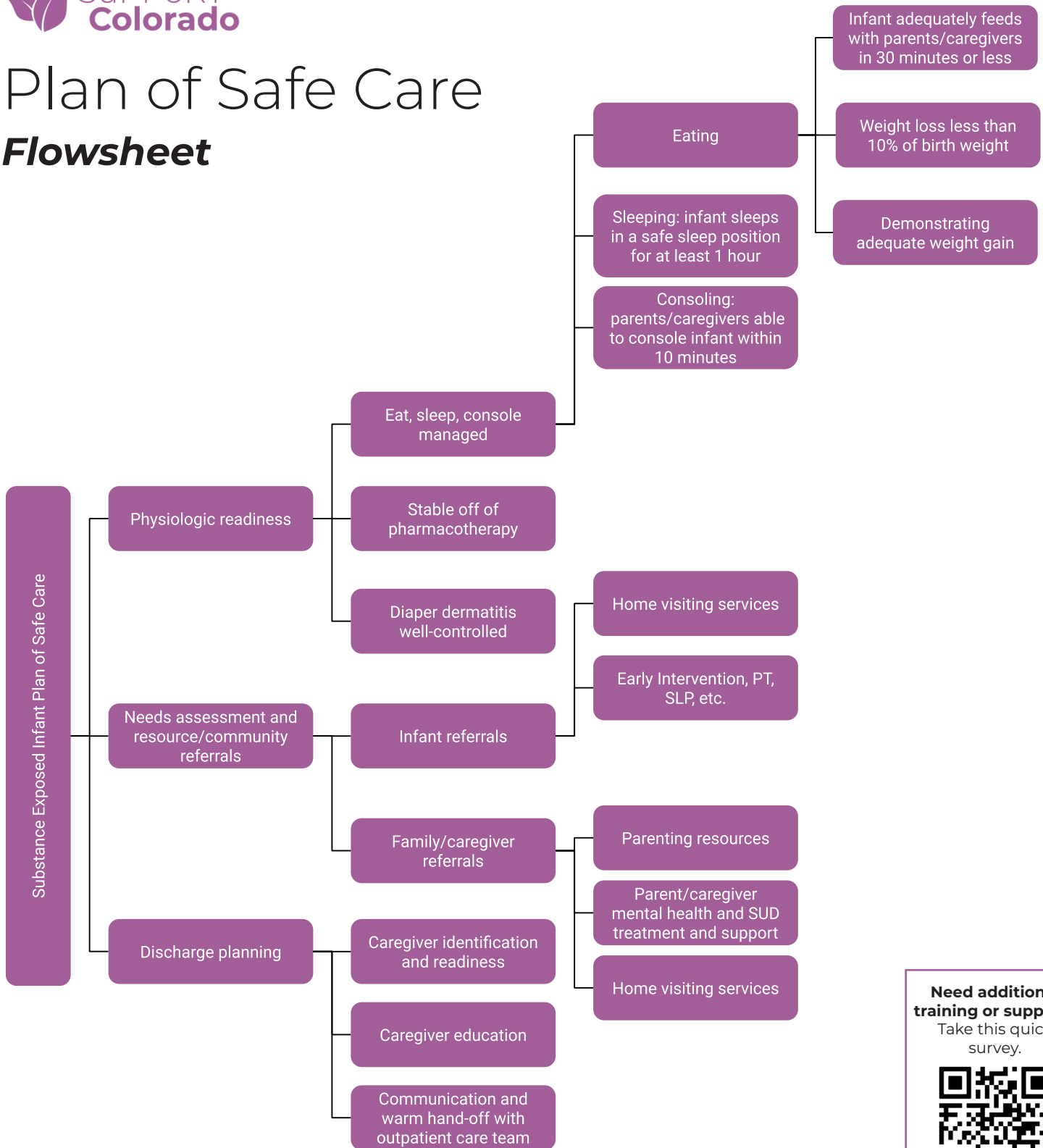
illuminatecolorado.org/SupportColorado



illuminate
Building Brighter Childhoods

Plan of Safe Care

Flowsheet



Need additional training or support?
Take this quick survey.

